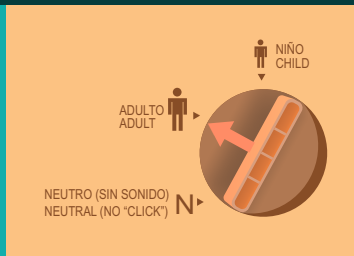




## KEY FEATURES AND FUNCTIONS



> **TWO IN ONE SIMULATOR**



> **EXCLUSIVE THREE-POSITION SELECTOR DIAL**



> **BREATHING FUNCTION: REAL-LIKE SYSTEM**



> **QUICK AND EASY ASSEMBLY**



> **AED TRAINING**



> **ULTRA HYGIENIC**

## HOW TO USE AND CLEAN THE MANIKIN

The manufacturer recommends the individual use of the complements during the training. COrrrect cleaning of the simulator and the individual use of the complements ensures maximum hygiene and prevents possible contagion of the students during the practice.

The one-way valve helps to prevent cross contamination but biological contamination requires that the lung bag is disposed of at the end of each teaching day.

### CLEANING AND DISINFECTING THE MANIKIN



Protection during training is supplemented by the use of a face mask for the practice of mouth-to-mouth resuscitation.



The simulator must be disinfected at the end of each training session. Separate facial skin from the head to clean lips and face.



After training valve and lung bag should be changed. Remove the head to replace them.



For better cleaning, separate the head and face and put them in a container with water and disinfectant.

## USE INSTRUCTIONS



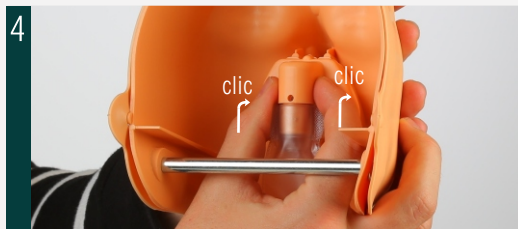
1 Remove the torso skin.



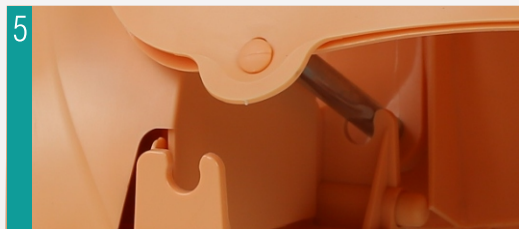
2 Attach the air intake nozzle to the valve.



3 The lung bag must be positioned under the metal bar, never above it.



4 Once the lung bag and valve are attached to each other, insert the valve into back part of face. Snap the top portion of the valve into place followed by the bottom portion. You will hear a "click" when connected properly.



5 Connect face assembly to torso by fitting metal bar onto the two hooks located on either side of the neck. Keep face assembly level and snap into place.



6 Put the lung on the torso and affix the sticker on the marked circle.



7 Place torso skin on torso and attach to the studs

## WARRANTY CERTIFICATE



This product has successfully passed the most stringent quality controls before leaving the factory. However, any malfunction due to assembly and / or components faults, please read the warranty and contact with the official distributor of the area.

ENFAVI, SL warrants this product to be free from defects in material and manufacture at the time of purchase for a period of TWO YEARS from invoice date of the purchase.

If during the period of the warranty, there is a product defect attributable to the manufacturing process, material failure and / or manufacture, the consumer shall inform to the official distributor within 10 business days after learning of the defect, and at the official distributor discretion, the product will either be repaired or replaced.

### CONDITIONS OF WARRANTY:

**Details and documentation:** A copy of the invoice covering the purchase of your product is required to have warranty coverage. In addition to specifics of the product purchase, the invoice must provide the following information: name and address of the buyer.

**Exclusions:** This warranty specifically excludes the following:

- Damage and / or defects to the product resulting from misuse, or negligence of the user, including the use of the product for purposes other than its intended use.
- Damage and / or defects caused by the use of external agents such as lime or other noxious chemicals or corrosives.
- Damage and / or defects due to improper maintenance or lack of cleaning.
- Damage and / or defects arising from use of manikin parts not made by the manufacturer of the manikin.

**Geographical coverage:** The warranty is extended to all countries where this product is sold by a distributor, ENFAVI, S.L. or assigned by ENFAVI, S.L.

**Cancellation of the warranty:** Product warranty is cancelled:

- In cases of damage caused by repairs performed by persons other than authorized service agents of ENFAVI, SL, and / or if parts or accessories are used in the manikin other than original parts or accessories manufactured by ENFAVI, SL.
- By changing the data on the invoice, sales receipt or packing slip.